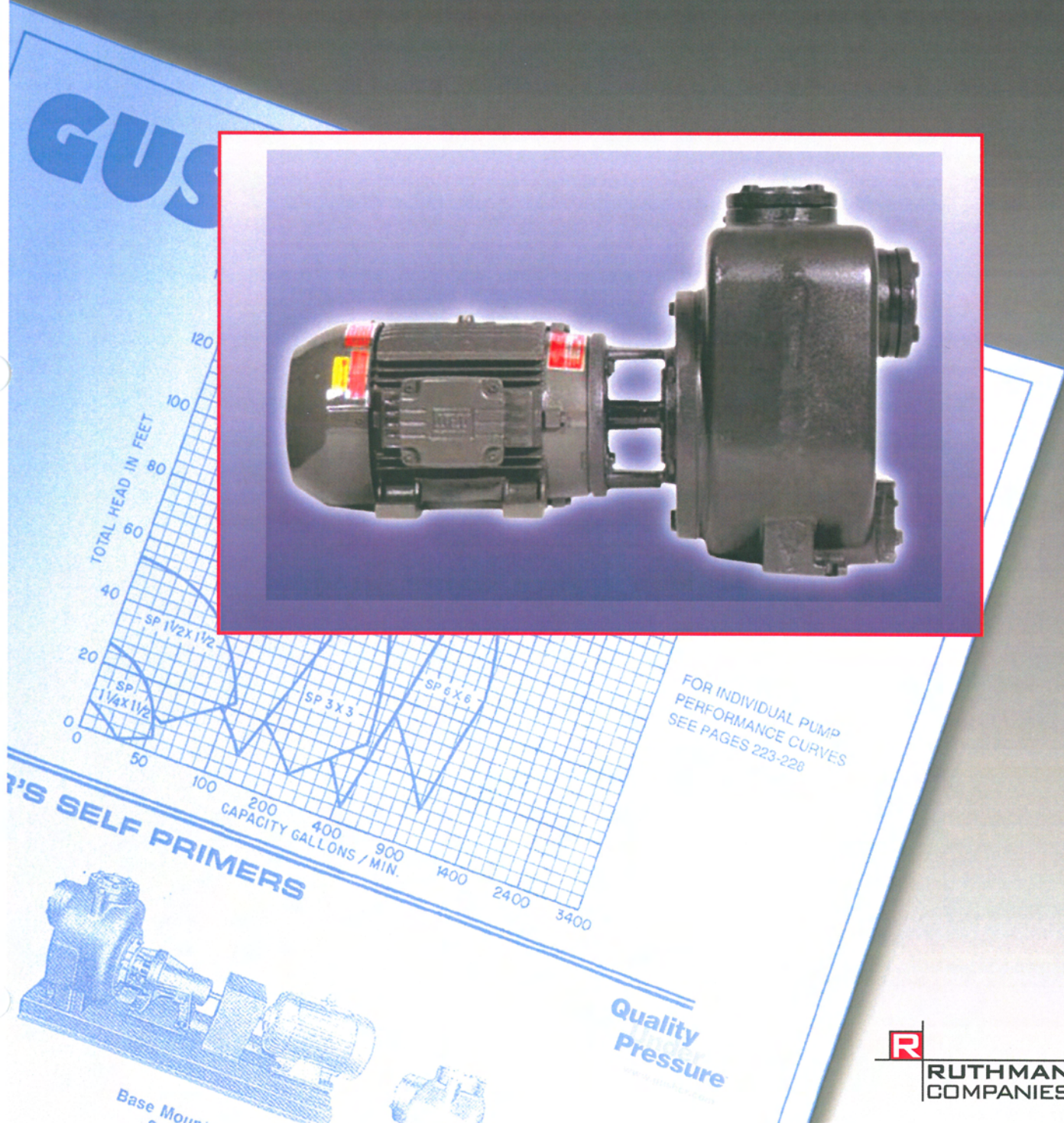
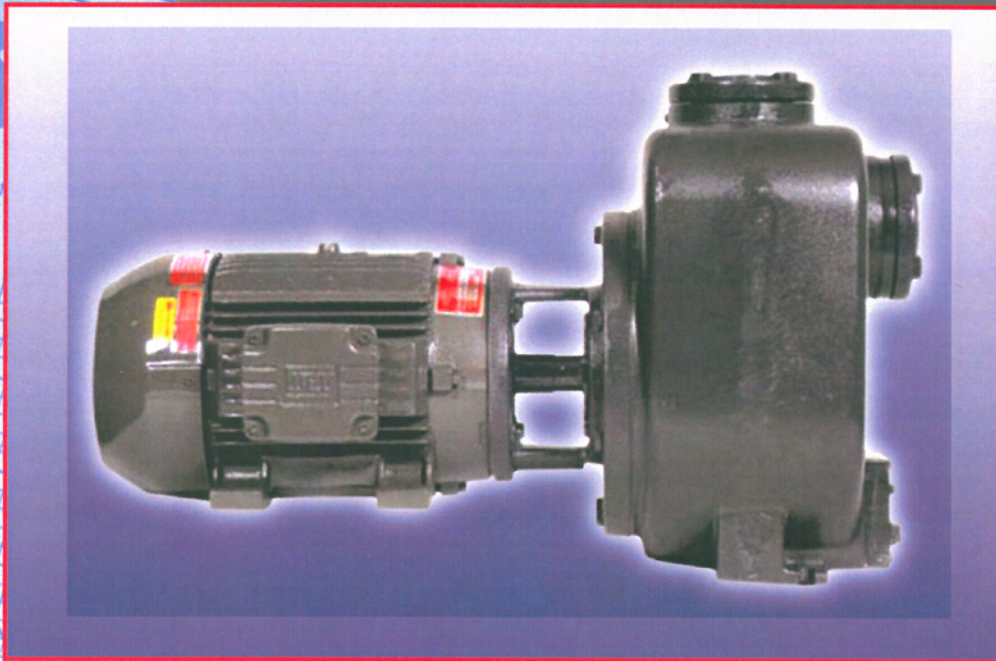


Centrifugal Self Priming Pumps

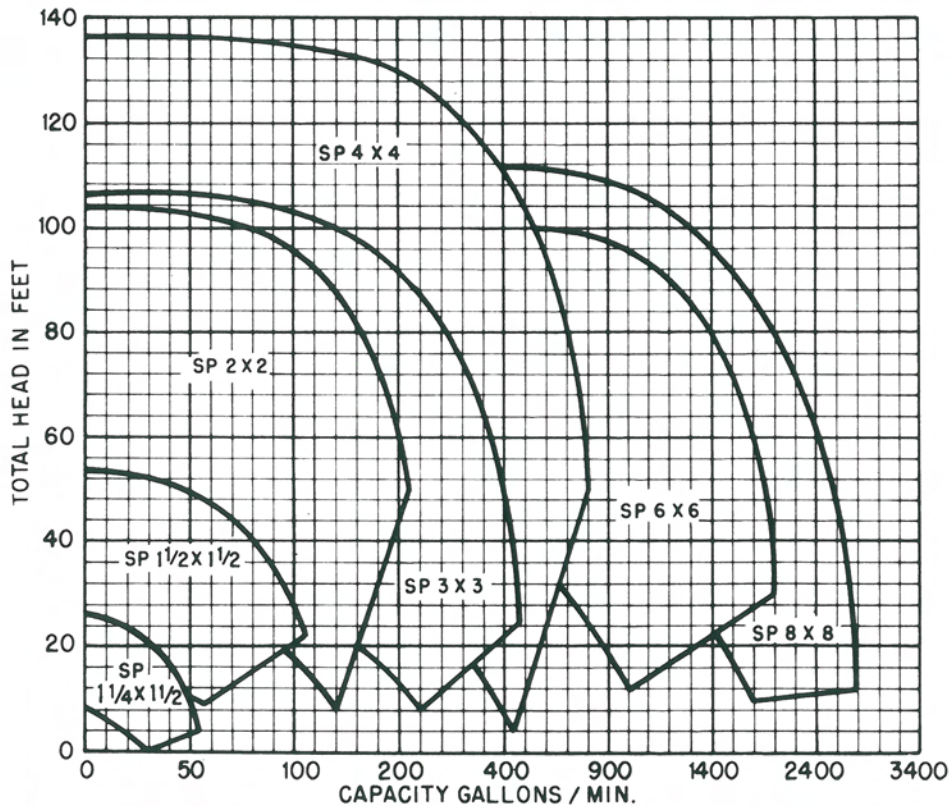
8000 Series



A RUTHMAN COMPANY
www.gusher.com



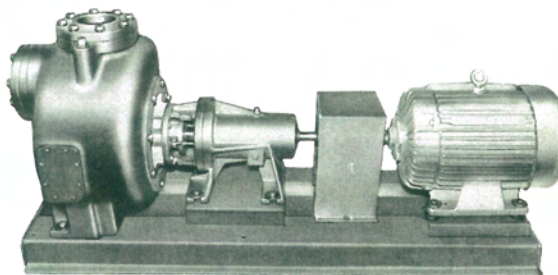
SELECTION CHART FOR 1750 R.P.M.



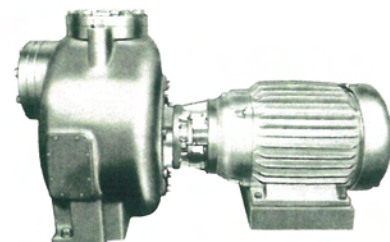
GUSHER'S SELF PRIMERS



Gasoline or Diesel
Engine Driven Style



Base Mounted
Style



Close Coupled Style

Designed for Wide Range of Service, From Agricultural to Industrial:

- Capacities to 2800 G.P.M. @ 1750 R.P.M.
- Heads to 135' @ 1750 R.P.M.
- Suction Lifts to 25'
- Temperatures to 600°F.
- Services—Filtration, Irrigation, Dewatering, Transfer, Industrial Sump, Shallow Sump Washers, Tank Car Unloading

Design Features:

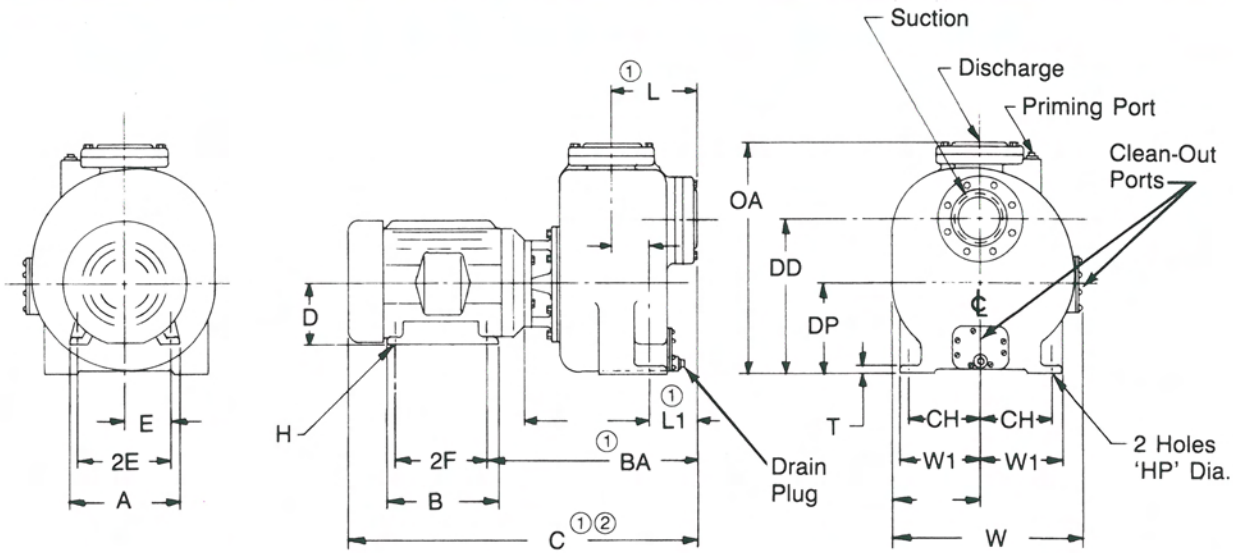
- Heavy Duty Construction w/Wear Plate as Standard Construction
- Back Pull-Out for Ease of Inspection and Low Cost Maintenance

- Clean-Out Ports for Fast Removal of Foreign Objects
- Semi-Open Impellers
- No Check Valves Required in Suction Line
- Priming and Air Separation Accomplished Within Casing. No External Valves, Air Separator or Priming Chamber Required.
- 316 S.S. Shaft Sleeve and Mechanical Seal Standard

Optional Features:

- Various Drives Available:
Electric Motor, Gasoline Engine, Diesel Engine, Pedestal and Base Mounted Styles
- External Impeller Adjustment for Renewable Efficiency
- Flapper Valve for Instantaneous Liquid Delivery
- Packing Available Upon Request

CLOSED COUPLED STYLE "CC"



MODEL	H.P.	N.E.M.A. Frame Size	N.P.T. Disch.	N.P.T. Suction	N.P.T. Prime Port	DIMENSIONS IN INCHES																		
						A	B	BA	C	CH	D	DD	DP	E	2E	2F	H	HP	L	L1	OA	T	W	W1
SP1½x1½-5SE	½ & ¾	56J	1¼	1½	¾	6½	4½	10¾	17½/16	—	3½	7½/32	4¼	27/16	47/8	3	11/32	—	39/16	—	10	—	8½	4¼
	1								18½/16															
	1½								187/8															
	2								197/8															
SP1½x1½-7SE	1	143JP	1½	1½	¾	7	5½/16	187/8	27½	39/16	3½	65/8	5¼	2¾	5½	4	11/32	7/16	67/16	37/16	10	¾	9¾	315/16
	1½								145JP															
	2								182JP															
	3								182JP															
SP2x2-10SE	1½	143JP	2	2	¾	7	5½/16	197/8	28½	4	3½	9	5½	2¾	5½	4	11/32	7/16	615/16	49/32	13¼	¾	14½	5
	2	145JP																						
	3	182JP																						
	5	184JP																						
SP3x3-10SE	2	145JP	3	3	1	7	5½/16	217/16	301/16	4½	4½	14½	8½	3¾	7½	4	11/32	¾	8½	4¾	211/8	½	17½	5½
	3	182JP																						
	5	184JP																						
	7½	213JP																						
SP4x4-11SE	5	184JP	4	4	1	9	65/8	23½	3215/16	7½	4½	16	9½	3¾	7½	5½	13/32	11/16	83/16	415/16	237/8	¾	19½	8½
	7½	213JP																						
	10	215JP																						
	15	254JP																						
SP6x6-10SE	10	215JP	6	6	1	10½	85/8	275/8	395/8	8¾	5¼	18¾	11¼	4¼	8½	7	13/32	13/16	105/16	51/16	273/8	¾	22¾	10
	15	254JP																						
	20	256JP																						
	25	284JP																						
SP8x8-11SE	20	256JP	8	8	1	12½	113/8	30¾	477/16	9¾	6¼	22½	13	5	10	10	17/32	13/16	1113/16	79/16	3213/16	1	26¼	10½
	25	284JP																						
	30	286JP																						
	40	324JP																						
SP8x8-11SE	30	286JP	8	8	1	14	12½	489/16	489/16	9¾	7	22½	13	5½	11	11	17/32	13/16	1113/16	79/16	3213/16	1	26¼	10½
	40	324JP																						
	50	326JP																						
	60	364JP																						
SP8x8-11SE	20	256JP	8	8	1	15½/16	14	285/8	481/16	9¾	8	22½	13	6¼	12½	12	21/32	13/16	1113/16	79/16	3213/16	1	26¼	10½
	25	284JP																						
	30	286JP																						
	40	324JP																						
SP8x8-11SE	50	326JP	8	8	1	173/8	14½	317/8	521/16	9	9	22½	13	7	14	11¼	21/32	13/16	1113/16	79/16	3213/16	1	26¼	10½
	60	364JP																						

1 Includes Flapper Valve

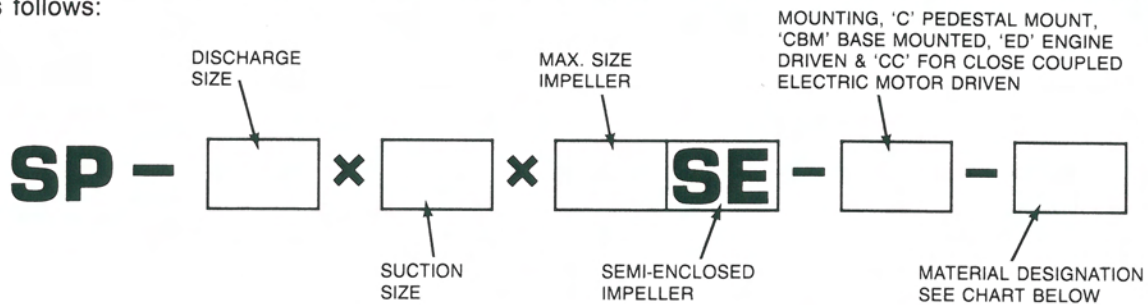
2 Varies With Motor Manufacturer

3 Dim. For 230/460 V.-60 Cy.-3 Ph.-TEFC Motors

4 Dim. For Estimating Only, Certified Drawing Supplied Upon Request

ORDERING INFORMATION

Order the Gusher 8000 Series Pump to meet your needs by model number. The model number should be specified as follows:



EXAMPLE: For ordering a Coupled Base Mounted Pump with a 2" discharge and 2" diameter suction with impeller of 10" maximum. Ductile iron construction. The model number for ordering description would be: SP-2x2x10SE-CBM-DI

Materials of Construction

Material Designation	Type
D.I.	All iron construction, ductile iron
C.I.	All iron construction, cast iron
B.F.	Bronze fitted
S.F.	Stainless steel fitted

Motor Specifications

Please furnish the following information on all orders: Horsepower, Frame Size, Voltage, RPM, Hertz and Phase. If a special motor is required specify: i.e. Delco GM-7EQ.

The **Base Mounted Pump** is designed to accept a Nema Frame Foot Mounted Motor.

Note: if motor is ordered it will be factory mounted unless otherwise specified.

We Can Help

Our engineering department will help you select the proper pump for your application. Call or write. Performance Curves are available on all pumps.

