

**SPUR GEAR PRODUCT LINE:
CAST & DUCTILE IRON SEALLESS MAG DRIVE PUMPS
SERIES SG-805, SGN-805, SG-807, SGN-807, SG-810, SG-814**

Section	1453
Page	1453.1
Issue	E

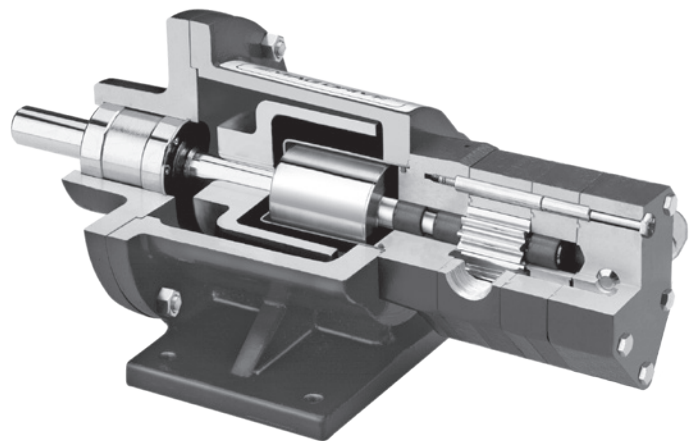
TABLE OF CONTENTS

Features & Benefits2
 Model Number Key2
 Standard Materials of Construction2
 Typical Applications.....2
 Specifications3
 Mounting Options.....4
 Dimensions – SG-805 & SGN-805 Series – MD-A
 (B Drive – Footed Bracket)5
 Dimensions – SG-807 & SGN-807 Series – MD-A
 (B Drive – Footed Bracket)6
 Dimensions – SG-807 & SGN-807 Series – MD-B
 (B Drive – Footed Bracket)7
 Dimensions – SG-810 Series MD2-B & SG-814 Series
 MD2-C (B Drive – Footed Bracket).....8
 Dimensions – "U" Models8
 Dimensions – "M" Models.....8
 Dimensions – SG-805 & SGN-805 Series – MD-A NEMA C
 (M Drive – Footless Bracket)9
 Dimensions – SG-807 & SGN-807 Series – MD-A NEMA C
 (M Drive – Footless Bracket)10
 Dimensions – SG-807 & SGN-807 Series – MD-A NEMA C
 (M Drive – Footed Bracket).....11
 Dimensions – SG-807 & SGN-807 Series – MD-B NEMA C
 (M Drive – Footed Bracket).....12
 Dimensions – SG-810 Series MD2-B & SG-814 Series
 MD2-C (M Drive – Footed Bracket)13
 Dimensions – "U" Models for NEMA C Face Motors.....13
 Dimensions – "M" Models for IEC B5 Flange Motors.....13
 NPSH Required14

SERIES DESCRIPTION

Where shaft seal leakage is not allowable, for liquids that are hard to seal, or where seal maintenance is difficult, Viking Mag Drive® sealless SG pumps are the solution. In this type of pump, a canister hermetically seals the liquid within the pump. Inner magnets are connected to the pump drive shaft inside the canister, and an outer magnet assembly rotates outside of the canister, driven by a motor or other drive, so that magnetic forces pass through the canister to the inner magnets and cause the drive shaft to rotate. This eliminates traditional dynamic shaft seals, and problems associated with them (wear, leakage, air infiltration).

A hollow drive shaft allows some liquid to flow by means of pressure differential from the high pressure side of the pump through the shaft, into the canister and back to the low pressure side of the pump. This provides magnet cooling and prevents product stagnation.



RELATED PRODUCTS

Cast Iron Pumps: Catalog Section 1451

OPERATING RANGE

SERIES	NOMINAL FLOW		MAXIMUM PRESSURE*		TEMPERATURE RANGE		VISCOSITY RANGE	
	GPM	m ³ /h	PSI	Bar	°F	°C	SSU	cSt
SG-805 & SGN-805	0.7 - 11.2	.16 - 2.54	500	34	-40 to +450	-40 to +230	28 to 250,000	1 to 55,000
SG-807 & SGN-807	4 - 32	.91 - 7.27	500	34	-40 to +450	-40 to +230	28 to 250,000	1 to 55,000
SG-810	25 - 50	5.68 - 11.36	500	34	-40 to +450	-40 to +230	28 to 250,000	1 to 55,000
SG-814	70 - 190	15.9 - 43.15	500	34	-40 to +450	-40 to +230	28 to 250,000	1 to 55,000

* to 500 PSI (34 Bar) Continuous, to 2,500 PSI (170 Bar) Intermittent Pressure

Section	1453
Page	1453.2
Issue	E

SPUR GEAR PRODUCT LINE: CAST & DUCTILE IRON SEALLESS MAG DRIVE PUMPS SERIES SG-805, SGN-805, SG-807, SGN-807, SG-810, SG-814

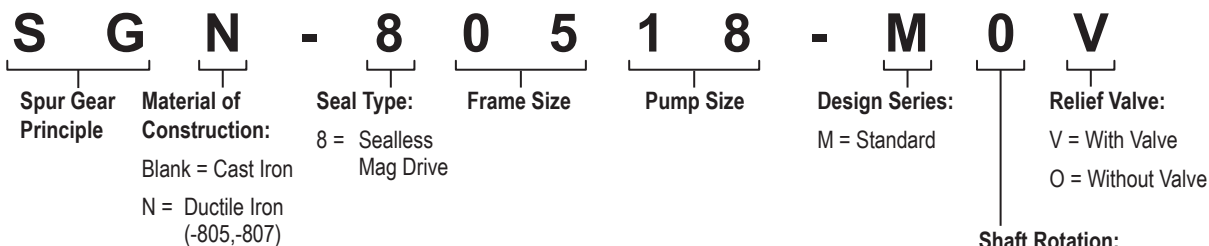
FEATURES & BENEFITS

- Needle bearings provide high pressure capabilities, sleeve bearing options available
- Close-coupled motor mount or foot bracket options to match space or motor requirements

TYPICAL APPLICATIONS

- Fuels and Additives
- Polyurethane Meter / Mix
- Adhesive & Sealant Dispensing
- Pipeline Sampling
- Chemical Metering
- Heat Transfer Oils

MODEL NUMBER KEY



NOTE: Direction of rotation: clockwise is standard, counter-clockwise is optional. Bi-rotational is not available as Mag Drive.

NOTE: Mag Drive pumps are connected to a magnetic coupling, which is specified separately. Coupling options are MD-A and MD-B (SG-805,-807), MD2-B (SG-810) or MD2-C (SG-814). Specify NEMA or IEC face mount for close-coupled or bearing carrier for long-coupled.

Shaft Rotation:
(Viewed from Shaft End)
0 = Clockwise (standard)
1 = Counter-Clockwise (optional)

STANDARD MATERIALS OF CONSTRUCTION

Component	SG-805, -807	SGN-805, -807	SG-810, -814	Options
Casing, Bracket, Head, Separation Plate	Cast Iron, ASTM A823	Ductile Iron, ASTM A536	③ Cast Iron, ASTM A48	Surface Hardening (Vitek)
Relief Valve Body	Cast Iron, ASTM A823	Ductile Iron, ASTM A536	Cast Iron, ASTM A48	—
Relief Valve Poppet	Hardened Steel	Hardened Steel	Ductile Iron, ASTM A536	—
Relief Valve Spring	Steel, ASTM A229	Steel, ASTM A229	Chrome Silicon Spring Steel, ASTM A401	—
Gears	Hardened Steel	Hardened Steel	Hardened Steel	—
Shafts	Case-Hardened Steel ASTM A322	Case-Hardened Steel ASTM A322	Case-Hardened Steel ASTM A322	Nitalloy
Anti-Friction Needle Bearings	—	—	—	Bearing Steel
Sleeve Bearings	Carbon Graphite	Carbon Graphite	Carbon Graphite	Silicon Carbide
O-Rings	Buna-N	Buna-N	Buna-N	Neoprene, PTFE, FFKM, FKM
Canister	316L Stainless Steel	316L Stainless Steel	316L Stainless Steel	Alloy C
Magnetic Coupling Bracket (not wetted)	④ Cast Iron, ASTM A823	④ Cast Iron, ASTM A823	Cast Iron, ASTM A823	—
Magnets (outer magnets nickel plated, inner magnets sealed in SS canister)	① Neodymium Iron Boron	① Neodymium Iron Boron	① Neodymium Iron Boron	② Samarium Cobalt

① Maximum temperature 225°F / 107°C.

② Maximum temperature 500°F / 260°C.

③ Casing is Ductile Iron ASTM A536 Grade 65-45-12 (Vitek Hardened).

④ Magnetic coupling brackets are aluminum for 182/184TC frame motors.

SPUR GEAR PRODUCT LINE:
CAST & DUCTILE IRON SEALLESS MAG DRIVE PUMPS
 SERIES SG-805, SGN-805, SG-807, SGN-807, SG-810, SG-814

Section	1453
Page	1453.3
Issue	E

SPECIFICATIONS

⑤ Model Number	Port Size Inches	Nominal Capacity at 50 Hz Motor Speeds (1450 RPM)		Nominal Capacity at 60 Hz Motor Speeds (1750 RPM)		Maximum Continuous Pressure		Approximate Shipping Weight (Pump with Valve, but Less Power)		② Magnetic Coupling			① Maximum Working Pressure		Approximate Shipping Weight (Coupling Only, Ready to Accept but Less Power)	
		GPM	m ³ /h	GPM	m ³ /h	PSIG	BAR	Lbs.	Kg.	Series	Torque		PSIG	BAR	Lbs.	Kg.
											Ft-Lbs	Nm				
SG-80518	½ ③	0.57	0.13	0.7	0.16	500	34	6	2.7	MD-A	4 9	5.4 12.2	1000	69	31	14
SG-80525	½ ③	0.84	0.19	1	0.23	500	34	6	2.7							
SG-80535	½ ③	1.14	0.26	1.4	0.32	500	34	6	2.7							
SG-80550	½ ③	1.67	0.38	2	0.45	500	34	7	3.2							
SG-80570	½ ③	2.33	0.53	2.8	0.64	500	34	7	3.2							
SG-80510	½ ③	3.30	0.75	4	0.91	500	34	8	3.6							
SG-80514	¾ ③	4.62	1.05	5.6	1.27	500	34	9	4.1							
SG-80519	¾ ③	6.30	1.43	7.6	1.73	200	14	10	4.5							
SG-80528	¾ ③	9.29	2.11	11.2	2.54	100	7	11	5.0							
SG-80741	1 ③	3.30	0.75	4	0.91	500	34	15	6.8	MD-A	4 9	5.4 12.2	1000	69	31	14
SG-80758	1 ③	4.62	1.05	5.6	1.27	500	34	17	7.7							
SG-80782	1 ③	6.65	1.51	8	1.82	500	34	18	8.2							
SG-80711	1 ③	9.29	2.11	11.2	2.54	500	34	19	8.6							
SG-80716	1 ③	13	3.01	16	3.63	500	34	20	9.1	MD-B	40	54.0	500	28	71	32
SG-80722	1½ x 1¼ ③	18	4.14	22	5.00	500	34	41	18.6							
SG-80732	1½ x 1¼ ③	27	6.02	32	7.27	500	34	43	19.5	MD2-B			700	48	145	66
SG-81013	1½ ④	21	4.70	25	5.68	500	34	49	22.1						145	66
SG-81026	2 ④	41	9.41	50	11.36	500	34	54	24.5	MD2-C			350	24	31	14
SG-81420	2 ④	58	13.17	70	15.90	500	34	130	59.1						31	14
SG-81436	3 ④	104	23.52	125	28.39	290	20	158	71.5						31	14
SG-81456	4 ④	157	35.75	190	43.15	190	13	189	85.8						31	14

NOTE: Maximum temperature (standard construction) 225°F, 107°C. Higher temperatures can be handled with Samarium Cobalt magnets and optional O-ring elastomers. See page 1453.14 for torque and temperature limits.

- ① Optional high pressure canisters available. Consult factory.
- ② See page 1453.14 for "Selecting the correct Mag Drive coupling."
- ③ NPT standard. Consult factory for other port size or type options such as BSP, SAE O-Ring or other.
- ④ SAE J518 Code 61 flange with metric threaded fastener holes standard.
Consult factory for other port sizes or type options such as NPT, BSP, SAE O-Ring or other.
- ⑤ Frame sizes 05 and 07 are also available in ductile iron (SGN)

Section	1453
Page	1453.4
Issue	E

**SPUR GEAR PRODUCT LINE:
CAST & DUCTILE IRON SEALLESS MAG DRIVE PUMPS
SERIES SG-805, SGN-805, SG-807, SGN-807, SG-810, SG-814**

MOUNTING OPTIONS



Motor Mounted Units (M Drive)

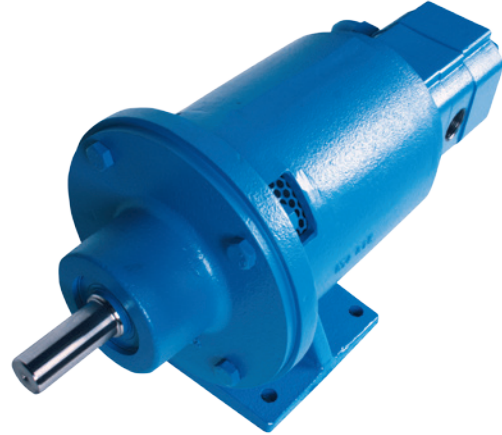
Pump and motor mounted to a flange mounting bracket with magnetic coupling.

This mounting arrangement eliminates the need for on-site coupling alignment that is normally required with a base mounted unit.

Series SG-805 & -807 pumps may be close coupled to NEMA-C faced motors and SG-810 & -814 to both NEMA-C and IEC B5 flanged motors to provide an easily-assembled, compact pumping unit. This mounting arrangement eliminates the need for on-site coupling alignment that is normally required for a base-mounted unit

Series:

SG-805, SGN-805, SG-807, SGN-807, SG-810, SG-814



Foot Bracket Mounted Pumps (B Drive)

Pump is mounted to a foot bracket.

Series SG-8 pumps are available with a bearing carrier mounted to the magnetic coupling to provide an external drive shaft for long-coupling to a reducer, gear motor or other drive. The 3.5" shaft height on MD-A couplings matches the shaft height on Viking "A" series reducers, as well as NEMA 56, 143 and 145 T motors. The 6.25" shaft height on MD-B couplings matches shaft height on 254/256 T motors. The MD2-B coupling for SG-810 has 5.5" shaft height matching Viking "B" reducers.

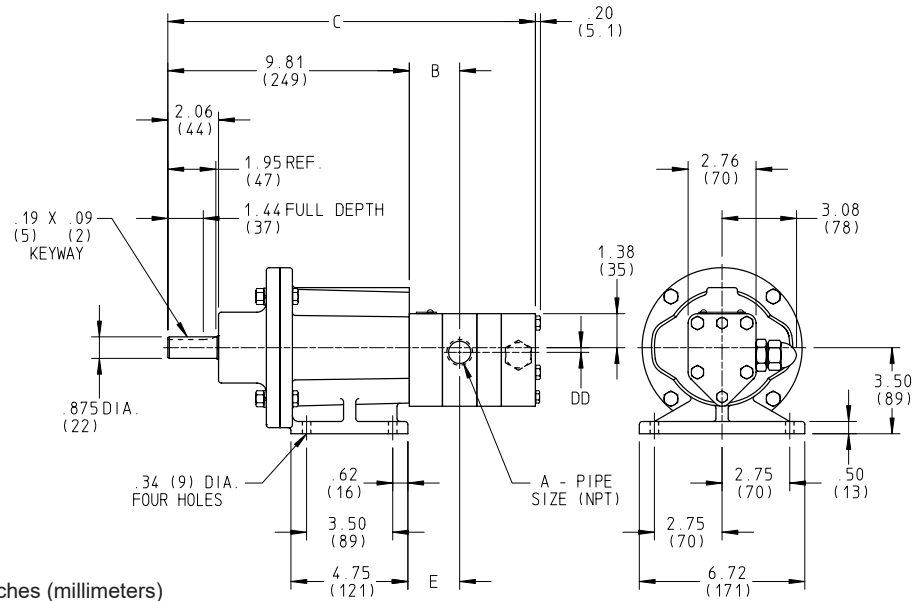
Series:

SG-805, SGN-805, SG-807, SGN-807, SG-810, SG-814

SPUR GEAR PRODUCT LINE:
CAST & DUCTILE IRON SEALLESS MAG DRIVE PUMPS
 SERIES SG-805, SGN-805, SG-807, SGN-807, SG-810, SG-814

Section	1453
Page	1453.5
Issue	E

DIMENSIONS – SG-805 & SGN-805 SERIES – MD-A
(B DRIVE – FOOTED BRACKET)



NOTE: Dimensions in inches (millimeters)

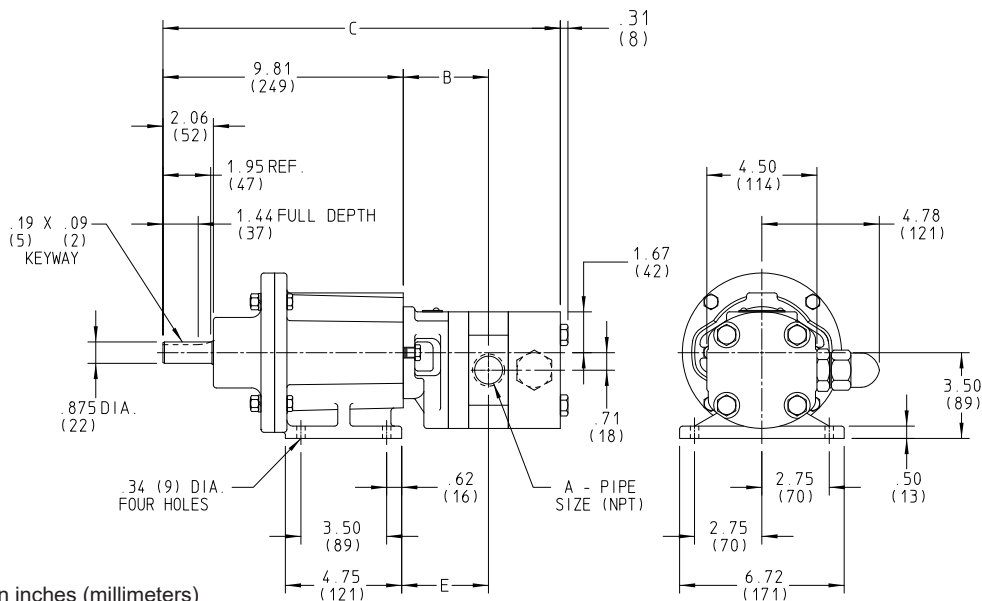
Model Number	A (in)		WITH R/V			LESS R/V			DD
			B	C	E	B	C	E	
SG-80518MD-A SGN-80518MD-A	1/2	in	2.02	13.71	2.08	2.21	12.71	2.27	0.31
		mm	51	348	53	56	323	58	8
SG-80525MD-A SGN-80525MD-A	1/2	in	2.09	13.78	2.15	2.28	12.78	2.34	0.31
		mm	53	350	55	58	325	59	8
SG-80535MD-A SGN-80535MD-A	1/2	in	2.19	13.88	2.25	2.38	12.88	2.44	0.31
		mm	56	352	57	60	327	62	8
SG-80550MD-A SGN-80550MD-A	1/2	in	2.34	14.03	2.40	2.53	13.03	2.59	0.31
		mm	59	356	61	64	331	66	8
SG-80570MD-A SGN-80570MD-A	1/2	in	2.54	14.23	2.60	2.73	13.23	2.79	0.31
		mm	65	361	66	69	336	71	8
SG-80510MD-A SGN-80510MD-A	1/2	in	1.84	14.53	1.90	1.84	13.53	1.90	0.31
		mm	47	369	48	47	344	48	8
SG-80514MD-A SGN-80514MD-A	3/4	in	2.04	14.93	2.10	2.04	13.93	2.10	0.19
		mm	52	379	53	52	354	53	5
SG-80519MD-A SGN-80519MD-A	3/4	in	2.29	15.43	2.35	2.29	14.43	2.35	0.19
		mm	58	392	60	58	367	60	5
SG-80528MD-A SGN-80528MD-A	3/4	in	2.04	16.33	2.10	2.04	15.33	2.10	0.19
		mm	52	415	53	52	389	53	5

These dimensions are average and not for construction purposes. Certified prints on request.

Section	1453
Page	1453.6
Issue	E

SPUR GEAR PRODUCT LINE:
CAST & DUCTILE IRON SEALLESS MAG DRIVE PUMPS
SERIES SG-805, SGN-805, SG-807, SGN-807, SG-810, SG-814

DIMENSIONS – SG-807 & SGN-807 SERIES – MD-A
(B DRIVE – FOOTED BRACKET)



NOTE: Dimensions in inches (millimeters)

Model Number	A (in)		WITH R/V			LESS R/V		
			B	C	E	B	C	E
SG-80741MD-A SGN-80741MD-A	½	in	3.07	15.81	3.13	3.26	14.19	3.32
		mm	78	402	80	83	360	84
SG-80758MD-A SGN-80758MD-A	½	in	3.24	15.98	3.30	3.43	14.36	3.49
		mm	82	406	84	87	365	89
SG-80782MD-A SGN-80782MD-A	½	in	3.48	16.22	3.54	3.67	14.60	3.73
		mm	88	412	90	93	371	95
SG-80711MD-A SGN-80711MD-A	½	in	3.81	16.55	3.87	4.00	14.93	4.06
		mm	97	420	98	102	379	103
SG-80716MD-A SGN-80716MD-A	¾	in	4.31	17.05	4.37	4.50	15.43	4.56
		mm	109	433	111	114	392	116
SG-80722MD-A SGN-80722MD-A	1½ S 1¼ D	in	4.25	20.20	4.31	4.25	18.58	4.31
		mm	108	513	109	108	472	109
SG-80732MD-A SGN-80732MD-A	1½ S 1¼ D	in	4.28	20.72	4.34	4.27	19.10	4.33
		mm	109	526	110	108	485	110

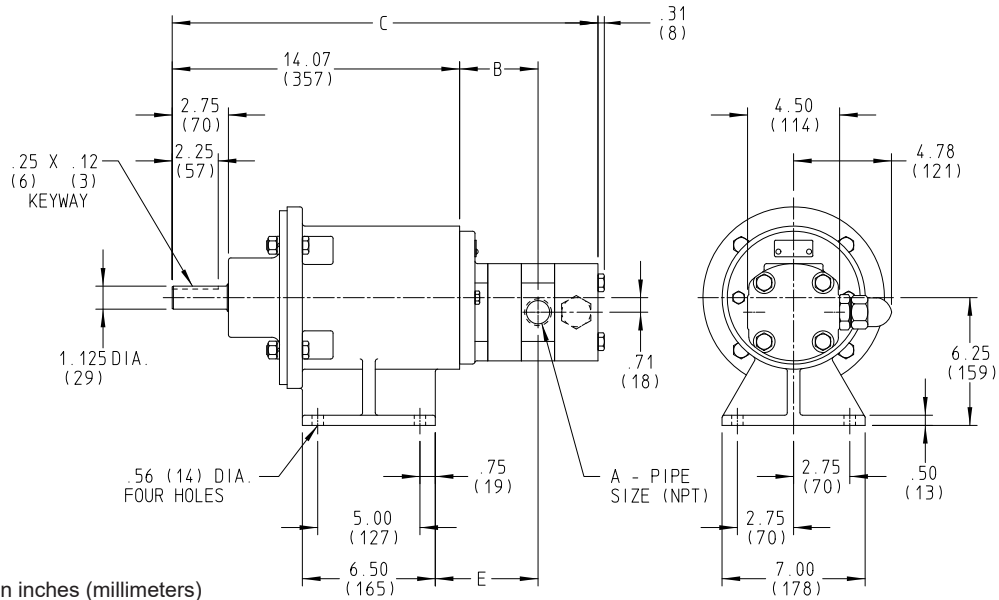
S = Suction Port
D = Discharge Port

These dimensions are average and not for construction purposes. Certified prints on request.

SPUR GEAR PRODUCT LINE:
CAST & DUCTILE IRON SEALLESS MAG DRIVE PUMPS
 SERIES SG-805, SGN-805, SG-807, SGN-807, SG-810, SG-814

Section	1453
Page	1453.7
Issue	E

DIMENSIONS – SG-807 & SGN-807 SERIES – MD-B
(B DRIVE – FOOTED BRACKET)



NOTE: Dimensions in inches (millimeters)

Model Number	A (in)		WITH R/V			LESS R/V		
			B	C	E	B	C	E
SG-80741MD-B SGN-80741MD-B	½	in	3.07	20.07	3.13	3.26	18.45	3.32
		mm	78	510	80	83	469	84
SG-80758MD-B SGN-80758MD-B	½	in	3.24	20.24	3.30	3.43	18.61	3.49
		mm	82	514	84	87	473	89
SG-80782MD-B SGN-80782MD-B	½	in	3.48	20.48	3.54	3.67	18.86	3.73
		mm	88	520	90	93	479	95
SG-80711MD-B SGN-80711MD-B	½	in	3.81	20.81	3.87	4.00	19.19	4.06
		mm	97	529	98	102	487	103
SG-80716MD-B SGN-80716MD-B	¾	in	4.31	21.30	4.37	4.50	19.68	4.56
		mm	109	541	111	114	500	116
SG-80722MD-B SGN-80722MD-B	1½ S 1¼ D	in	4.25	24.46	4.31	4.25	22.83	4.31
		mm	108	621	109	108	580	109
SG-80732MD-B SGN-80732MD-B	1½ S 1¼ D	in	4.28	24.98	4.34	4.27	23.36	4.33
		mm	109	634	110	108	593	110

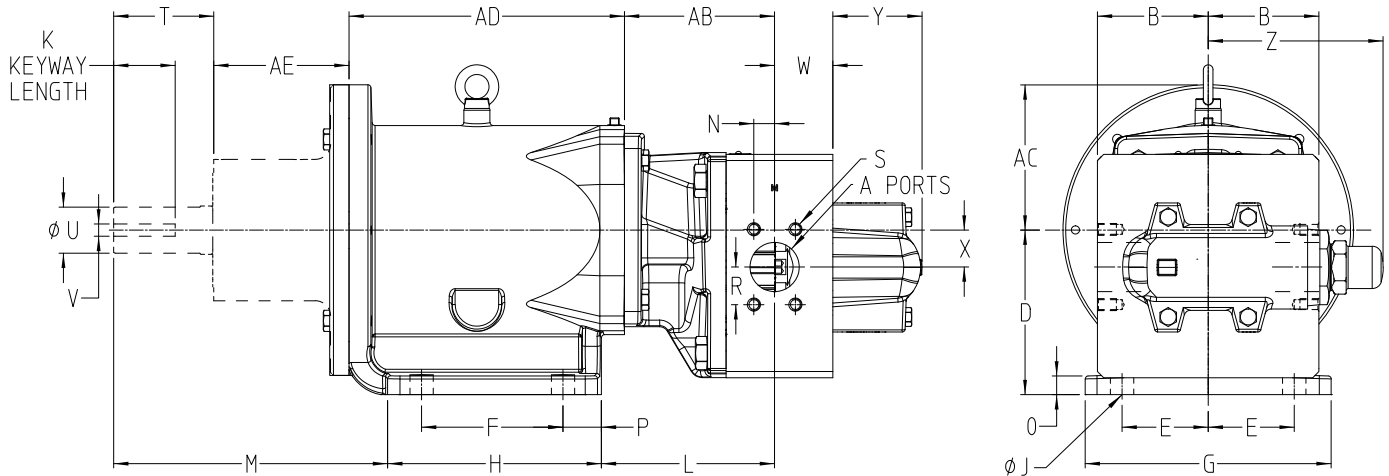
S = Suction Port
 D = Discharge Port

These dimensions are average and not for construction purposes. Certified prints on request.

Section	1453
Page	1453.8
Issue	E

SPUR GEAR PRODUCT LINE:
CAST & DUCTILE IRON SEALLESS MAG DRIVE PUMPS
SERIES SG-805, SGN-805, SG-807, SGN-807, SG-810, SG-814

DIMENSIONS – SG-810 SERIES MD2-B & SG-814 SERIES MD2-C (B DRIVE – FOOTED BRACKET)



Pump		AB	W ^①	W ^②	N	R	S	A (in)	X	Y	L ^③	L ^④	Z	B
SG-81013	in	5.91	2.13	2.07	1.90	0.70	M12 x 1.75 x 19.5	1.50	1.00	3.63	6.98	6.85	6.63	3.00
	mm	150	54	53	48	18			25	92	177	174	168	76
SG-81026	in	6.13	2.88	2.82	1.53	0.84	M12 x 1.75 x 19.5	2.00	1.00	3.63	7.20	7.07	6.63	3.00
	mm	156	73	72	39	21			25	92	183	180	168	76
SG-81420	in	6.10	2.43	2.37	0.84	1.53	M12 x 1.75 x 19.5	2.00	1.50	3.63	—	7.04	7.09	4.50
	mm	155	62	60	21	39			38	92	—	179	180	114
SG-81436	in	6.80	2.73	3.27	1.21	2.09	M16 x 2 x 28.5	3.00	1.50	3.63	—	7.74	7.09	4.50
	mm	173	69	83	31	53			38	92	—	197	180	114
SG-81456	in	7.19	4.94	4.88	1.53	2.56	M16 x 2 x 28.5	4.00	1.50	3.63	—	8.13	7.09	4.50
	mm	183	126	124	39	65			38	92	—	207	180	114

① Less Relief Valve ② With Relief Valve ③ MD2-B ④ MD2-C **NOTE:** Dimensions in inches (millimeters)

DIMENSIONS – "U" MODELS

Coupling		D	E	F	G	H	J	K	M	O	P	T	U	V	AC	AD	AE
MD2-B (SG-810)	in	5.50	2.75	4.88	7.00	6.52	0.56	2.12	7.30	0.53	0.88	2.72	1.13	0.25	4.50	9.30	2.87
MD2-C (SG-810, SG-814)	in	6.69	3.75	5.75	10.00	8.69	0.95	2.50	11.14	0.76	1.56	4.07	1.88	0.50	5.91	11.20	5.50

DIMENSIONS – "M" MODELS

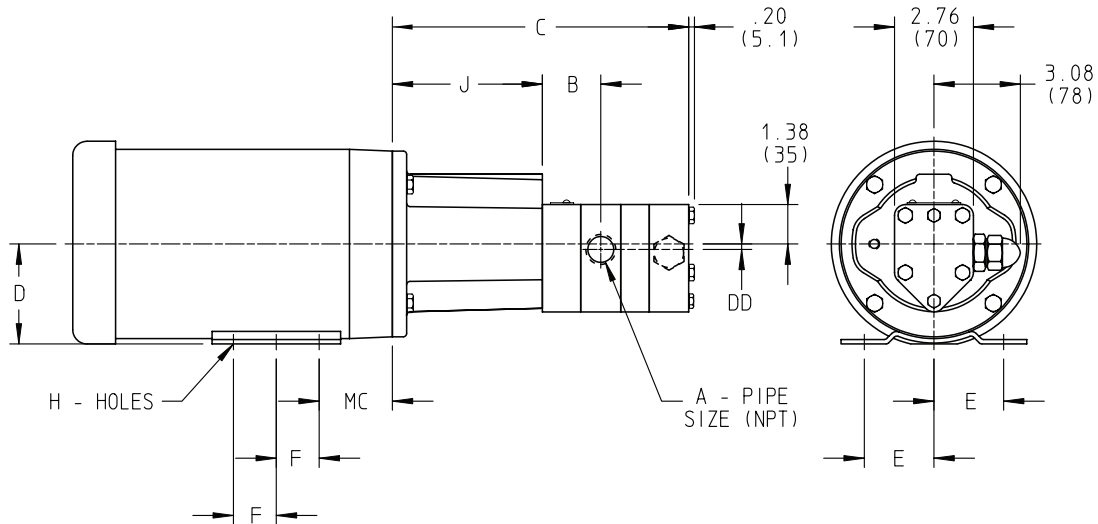
Coupling		D	E	F	G	H	J	K	M	O	P	T	U	V	AC	AD	AE
MD2-B (SG-810)	mm	145	70	89	178	130	15	46	192	14	22	56	28	8	125	216	78
MD2-C (SG-814)	mm	170	95	146	254	221	24	63	283	19	36	103	48	14	150	285	140

These dimensions are average and not for construction purposes. Certified prints on request.

SPUR GEAR PRODUCT LINE:
CAST & DUCTILE IRON SEALLESS MAG DRIVE PUMPS
 SERIES SG-805, SGN-805, SG-807, SGN-807, SG-810, SG-814

Section	1453
Page	1453.9
Issue	E

**DIMENSIONS – SG-805 & SGN-805 SERIES – MD-A NEMA C
 (M DRIVE – FOOTLESS BRACKET)**



NOTE: Dimensions in inches (millimeters)

NOTE: Footless bracket requires footed motor.

Model Number	A (in)	WITH R/V		LESS R/V		DD	
		B	C	B	C		
SG-80518MD-A SGN-80518MD-A	½	in mm	2.02 51	9.15 232	2.21 56	8.15 207	0.31 8
SG-80525MD-A SGN-80525MD-A	½	in mm	2.09 53	9.22 234	2.28 58	8.22 209	0.31 8
SG-80535MD-A SGN-80535MD-A	½	in mm	2.19 56	9.32 237	2.38 60	8.32 211	0.31 8
SG-80550MD-A SGN-80550MD-A	½	in mm	2.34 59	9.47 241	2.53 64	8.47 215	0.31 8
SG-80570MD-A SGN-80570MD-A	½	in mm	2.54 65	9.67 246	2.73 69	8.67 220	0.31 8
SG-80510MD-A SGN-80510MD-A	½	in mm	1.84 47	9.97 253	1.84 47	8.97 228	0.31 8
SG-80514MD-A SGN-80514MD-A	¾	in mm	2.04 52	10.37 263	2.04 52	9.37 238	0.19 5
SG-80519MD-A SGN-80519MD-A	¾	in mm	2.29 58	10.87 276	2.29 58	9.87 251	0.19 5
SG-80528MD-A SGN-80528MD-A	¾	in mm	2.04 52	11.77 299	2.04 52	10.77 274	0.19 5

Motor Frame Size	D	E	F	H	J (in)	MC
56C	3.50	2.44	1.50	0.34 SLOT	5.25	2.56
	89	62	38	9		65
143TC	3.50	2.75	2.00	0.34	5.25	2.88
	89	70	51	9		73
145TC	3.50	2.75	2.50	0.34	5.25	2.88
	89	70	64	9		73
182TC	4.50	3.75	2.25	0.41	5.69	3.62
	114	95	57	10		92
184TC	4.50	3.75	2.75	0.41	5.69	3.62
	114	95	70	10		92
213TC*	5.25	4.25	2.75	0.41	5.69	4.50
	133	108	70	10		114

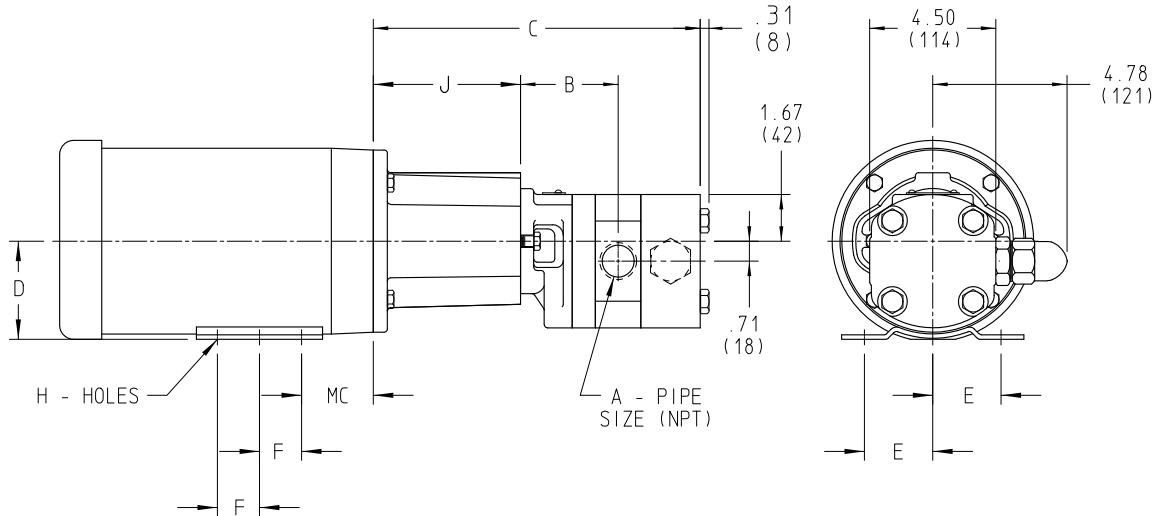
* Motor shaft must be modified to resemble 182TC-184TC shaft length, diameter and key.

These dimensions are average and not for construction purposes. Certified prints on request.

Section	1453
Page	1453.10
Issue	E

**SPUR GEAR PRODUCT LINE:
CAST & DUCTILE IRON SEALLESS MAG DRIVE PUMPS
SERIES SG-805, SGN-805, SG-807, SGN-807, SG-810, SG-814**

**DIMENSIONS – SG-807 & SGN-807 SERIES – MD-A NEMA C
(M DRIVE – FOOTLESS BRACKET)**



NOTE: Dimensions in inches (millimeters)

NOTE: Footless bracket requires footed motor.

Model Number	A (in)	WITH R/V		LESS R/V		
		B	C	B	C	
SG-80741MD-A SGN-80741MD-A	1/2	in	3.07	11.25	3.26	9.63
		mm	78	286	83	245
SG-80758MD-A SGN-80758MD-A	1/2	in	3.24	11.42	3.43	9.80
		mm	82	290	87	249
SG-80782MD-A SGN-80782MD-A	1/2	in	3.48	11.66	3.67	10.04
		mm	88	296	93	255
SG-80711MD-A SGN-80711MD-A	1/2	in	3.81	11.99	4.00	10.37
		mm	97	305	102	263
SG-80716MD-A SGN-80716MD-A	1/2	in	4.31	12.49	4.50	10.87
		mm	109	317	114	276
SG-80722MD-A SGN-80722MD-A	1/2	in	4.25	15.64	4.25	15.02
		mm	108	397	108	356
SG-80732MD-A SGN-80732MD-A	3/4	in	4.75	16.64	4.75	15.02
		mm	121	423	121	382

Motor Frame Size	D	E	F	H	J (in)	MC
56C	3.50	2.44	1.50	0.34 SLOT	5.25	2.56
	89	62	38	9		65
143TC	3.50	2.75	2.00	0.34	5.25	2.88
	89	70	51	9		73
145TC	3.50	2.75	2.50	0.34	5.25	2.88
	89	70	64	9		73
182TC	4.50	3.75	2.25	0.41	5.69	3.62
	114	95	57	10		92
184TC	4.50	3.75	2.75	0.41	5.69	3.62
	114	85	70	10		92
213TC*	5.25	4.25	2.75	0.41	5.69	4.50
	133	108	70	10		114

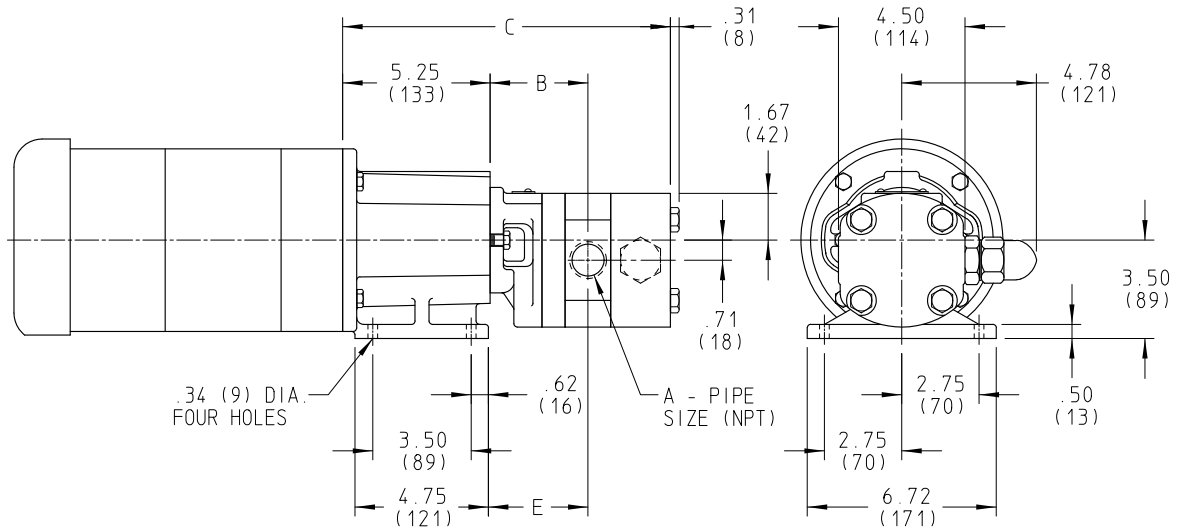
* Motor shaft must be modified to resemble 182TC-184TC shaft length, diameter and key.

These dimensions are average and not for construction purposes. Certified prints on request.

SPUR GEAR PRODUCT LINE:
CAST & DUCTILE IRON SEALLESS MAG DRIVE PUMPS
 SERIES SG-805, SGN-805, SG-807, SGN-807, SG-810, SG-814

Section	1453
Page	1453.11
Issue	E

**DIMENSIONS – SG-807 & SGN-807 SERIES – MD-A NEMA C
 (M DRIVE – FOOTED BRACKET)**



NOTE: Dimensions in inches (millimeters)
NOTE: Footed bracket requires footless motor.

Model Number	A (in)		WITH R/V			LESS R/V			Motor Frame
			B	C	E	B	C	E	
SG-80741MD-A SGN-80741MD-A	1	in	3.07	11.25	3.13	3.26	9.63	3.32	56C 143TC 145TC
		mm	78	286	80	83	245	84	
SG-80758MD-A SGN-80758MD-A	1	in	3.24	11.42	3.30	3.43	9.80	3.49	
		mm	82	290	84	87	249	89	
SG-80782MD-A SGN-80782MD-A	1	in	3.48	11.66	3.54	3.67	10.04	3.73	
		mm	88	269	90	93	255	95	
SG-80711MD-A SGN-80711MD-A	1	in	3.81	11.99	3.87	4.00	10.37	4.06	
		mm	97	305	98	102	263	103	
SG-80716MD-A SGN-80716MD-A	1	in	4.31	12.49	4.37	4.50	10.87	4.56	
		mm	109	317	111	114	276	116	
SG-80722MD-A SGN-80722MD-A	1½ S 1¼ D	in	4.25	15.64	4.31	4.25	14.02	4.31	
		mm	108	397	109	108	356	109	
SG-80732MD-A SGN-80732MD-A	1½ S 1¼ D	in	4.75	16.64	4.81	4.75	15.02	4.81	
		mm	121	423	122	121	382	122	

S = Suction Port
 D = Discharge Port

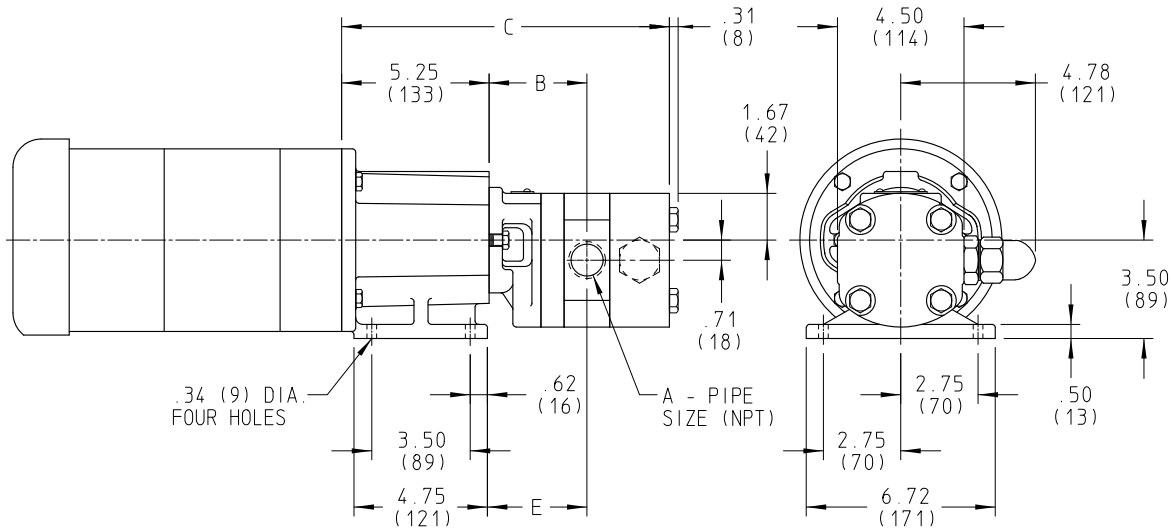
Footed bracket is only available for up to NEMA 145TC frame motors (4.5" rabbet) -
 180TC and 210TC motor frames with 8.5" rabbet are only available with footless bracket.

These dimensions are average and not for construction purposes. Certified prints on request.

Section	1453
Page	1453.12
Issue	E

SPUR GEAR PRODUCT LINE:
CAST & DUCTILE IRON SEALLESS MAG DRIVE PUMPS
SERIES SG-805, SGN-805, SG-807, SGN-807, SG-810, SG-814

**DIMENSIONS – SG-807 & SGN-807 SERIES – MD-B NEMA C
(M DRIVE – FOOTED BRACKET)**



NOTE: Dimensions in inches (millimeters)

NOTE: Footed bracket requires footless motor.

Model Number	A (in)		WITH R/V			LESS R/V			DD
			B	C	E	B	C	E	
SG-80741MD-B SGN-80741MD-B	1	in	2.60	13.97	3.79	2.80	12.35	3.98	182TC/184TC 213TC/215TC 254TC/256TC ①
		mm	66	355	96	71	314	101	
SG-80758MD-B SGN-80758MD-B	1	in	2.77	14.14	3.96	2.97	12.52	4.15	
		mm	70	359	101	75	318	105	
SG-80782MD-B SGN-80782MD-B	1	in	3.01	14.38	4.20	3.21	12.76	4.39	
		mm	76	365	107	82	324	112	
SG-80711MD-B SGN-80711MD-B	1	in	3.34	14.17	4.53	3.54	13.09	4.72	
		mm	85	374	115	90	332	120	
SG-80716MD-B SGN-80716MD-B	1	in	3.84	15.20	5.03	4.04	13.59	5.22	
		mm	98	386	128	103	345	133	
SG-80722MD-B SGN-80722MD-B	1½ S 1¼ D	in	3.78	18.35	4.97	3.78	16.73	4.97	
		mm	96	466	126	96	425	126	
SG-80732MD-B SGN-80732MD-B	1½ S 1¼ D	in	4.28	19.35	5.47	4.28	17.73	5.47	
		mm	109	491	139	109	450	139	

S = Suction Port

D = Discharge Port

Coupling will accept NEMA motor frames 182TC-256TC.

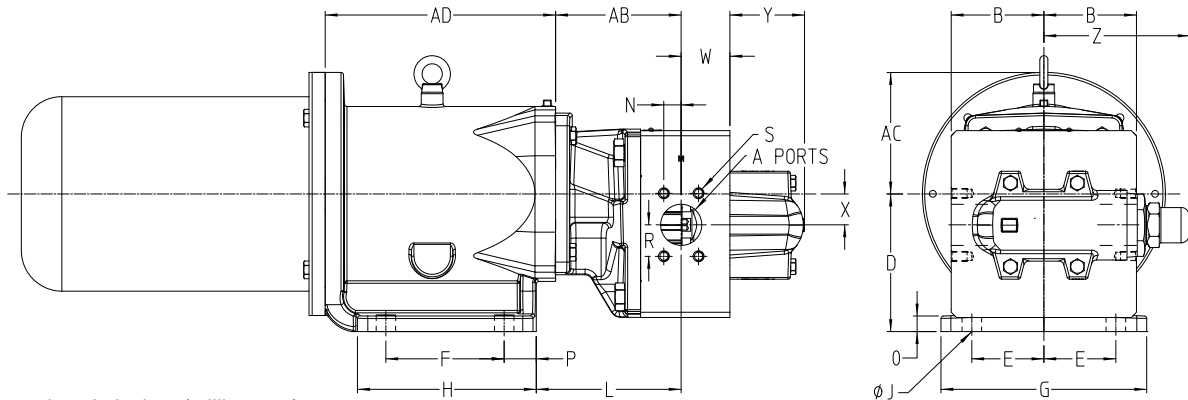
① NEMA 254TC-256TC will require shaft modification reducing shaft extension by 5/8".

These dimensions are average and not for construction purposes. Certified prints on request.

SPUR GEAR PRODUCT LINE:
CAST & DUCTILE IRON SEALLESS MAG DRIVE PUMPS
 SERIES SG-805, SGN-805, SG-807, SGN-807, SG-810, SG-814

Section	1453
Page	1453.13
Issue	E

DIMENSIONS – SG-810 SERIES MD2-B & SG-814 SERIES MD2-C (M DRIVE – FOOTED BRACKET)



NOTE: Dimensions in inches (millimeters)

Pump		AB	W	N	R	S	A (in)	X (in)	Y	L	Z	B
SG-81013	in	5.91	2.13	1.90	0.70	M12 x 1.75 x 19.5	1.50	1.00	3.63	6.98	6.63	3.00
	mm	150	54	48	18				92	177	168	76
SG-81026	in	6.13	2.88	1.53	0.84	M12 x 1.75 x 19.5	2.00	1.00	3.63	7.20	6.63	3.00
	mm	156	73	39	21				92	183	168	76
SG-81420	in	6.10	2.37	0.84	1.53	M12 x 1.75 x 19.5	2.00	1.50	3.63	7.04	7.11	4.50
	mm	155	60	21	39				92	179	181	114
SG-81436	in	6.80	3.27	1.21	2.09	M16 x 2 x 28.5	3.00	1.50	3.63	7.74	7.11	4.50
	mm	173	83	31	53				92	197	181	114
SG-81456	in	7.19	4.88	1.53	2.56	M16 x 2 x 28.5	4.00	1.50	3.63	8.13	7.11	4.50
	mm	183	124	39	65				92	207	181	114

DIMENSIONS – "U" MODELS FOR NEMA C FACE MOTORS

Coupling	NEMA Drive		D	E	F	G	H	J	O	P	AD
MD2-B (SG-810)	182/184TC	in	5.50	2.75	4.25	7.00	5.78	0.56	0.53	0.78	8.92
	213/215TC	in	5.50	2.75	4.88	7.00	6.41	0.56	0.53	0.78	9.30
	254/256TC	in	6.50	2.75	5.50	7.00	7.03	0.56	0.53	0.78	9.92
MD2-C (SG-814)	213 thru 256TC	in	6.69	3.75	5.75	10.00	8.53	0.95	0.76	1.40	11.95
	284/286TC	in	6.69	3.75	5.75	10.00	8.53	0.95	0.76	1.40	12.49

DIMENSIONS – "M" MODELS FOR IEC B5 FLANGE MOTORS

Coupling	IEC Drive		D	E	F	G	H	J	O	P	AD
MD2-B (SG-810)	100/112	mm	145	70	89	178	128	15	14	19	216
	132.00	mm	170	70	108	178	146	15	14	19	236
MD2-C (SG-814)	132	mm	170	95	146	254	217	24	19	36	284
	160/180	mm	203	120	165	305	235	24	19	35	314

Requires unfooted motor.

These dimensions are average and not for construction purposes. Certified prints on request.

Section	1453
Page	1453.14
Issue	E

SPUR GEAR PRODUCT LINE: CAST & DUCTILE IRON SEALLESS MAG DRIVE PUMPS SERIES SG-805, SGN-805, SG-807, SGN-807, SG-810, SG-814

NPSH REQUIRED

Printed performance curves are not available.

Performance curves can be electronically generated with the Viking Pump Curve Generator on vikingpump.com.

NPSH_R data is not available on the curve generator.

SELECTING THE CORRECT VIKING MAG DRIVE® COUPLING

1. Find pump HP and speed from the performance curves, which can be electronically generated with the Viking Pump Curve Generator, located on www.vikingpump.com.

2. Calculate the application torque (T), using this formula:

$$T \text{ (FT-LB)} = \frac{\text{HP}}{\text{SPEED}} \times 5252$$

3. Select the temperature correction factor (TCF) from Table 1 or Table 2.

STANDARD NEODYMIUM MAGNETS (For Application Temperatures Below 225°F.)							
Application Temp. (°F)	AMB	100	125	150	175	200	225
Application Temp. (°C)	20	38	52	66	79	93	107
TCF	1.0	.94	.88	.82	.76	.70	.64

Table 1: Temperature Correction Factors

OPTIONAL SAMARIUM COBALT MAGNETS (For Application Temperatures Above 225°F.)					
Application Temp. (°F)	175	200	300	400	500
Application Temp. (°C)	79	93	149	204	260
TCF	.74	.73	.69	.63	.59

Table 2: Temperature Correction Factors

4. Divide calculated application torque by TCF to get adjusted application torque.

5. Select coupling with rating equal to or greater than "adjusted application torque" (AAT) from Table 3. Viking couplings have a built-in service factor, so if you have calculated the AAT correctly, you can be comfortable with a coupling that is equal to your calculated torque.

MAGNETIC COUPLING TORQUE RATING TABLE		
Coupling Size	Torque (FT-LBS)	Nm
MD-A4	4	5.4
MD-A9	9	12.2
MD-B40	40	54.2
MD2-B14	14	19.0
MD2-B32	32	43.4
MD2-B50	50	67.8
MD2-C40	40	54.2
MD2-C90	90	122.0
MD2-C135	135	183.0
MD2-C180	180	244.0

Table 3

EXAMPLE

1. An application calls for pumping 1 GPM of 100 SSU (22 cSt) liquid at 400 PSI (27 Bar), at 100°F (38C), with a 1750 RPM motor. From the pump selector, an SG-80525 is selected, providing .95 GPM (3.6 LPM) at 1750 RPM, with .35 BHP (.26 kW).

2. Calculate torque (T).

$$\begin{aligned} \text{TORQUE (T)} &= \frac{.35}{1750} \times 5252 \\ &= 1.05 \text{ FT-LB} \end{aligned}$$

3. From the temperature correction factor table, the correction factor (TCF) = .94.

4. Calculate adjusted application torque.

$$\begin{aligned} \text{ADJUSTED APPLICATION TORQUE} &= \frac{1.05}{.94} \\ &= 1.12 \text{ FT-LB} \end{aligned}$$

5. Select coupling.

THE NEODYMIUM MD-A4 (4 FT-LB RATING > 1.12 FT-LB AAT) COUPLING IS THE PROPER SELECTION